

MASS

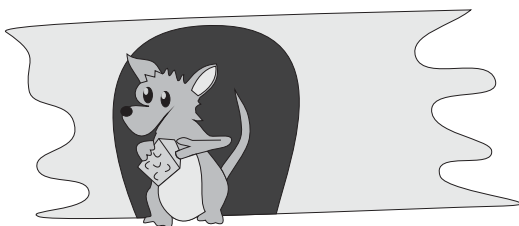
MARK

27

1. Complete the following sentences by writing in the correct unit of mass.

grams or **kilograms** or **tonnes**

- (a) Charmaine's cat weighed three _____.
- (b) The farmer produced 20 _____ of wheat.
- (c) The adult human brain weighs 1.3 _____.
- (d) Adam bought 100 _____ of his favourite chocolate.
- (e) Georgia caught a trout that weighed 750 _____.
- (f) Claire's baby weighed 3.2 _____ at birth.
- (g) Jeremy went hiking. After packing all his camping gear his back-pack weighed 20 _____.
- (h) Norman's mouse was quite large. It weighed 200 _____.



2. From the following list match the correct mass with the objects below.

- 635 kg
- 150 g
- 380 kg
- 12 tonnes
- 250 g
- 1200 kg
- 22 kg
- 85 kg
- 20 g
- 3 kg
- 190 tonnes

Object	Mass
Largest pumpkin	
This book	
A cricket ball	
A pencil	
Largest whale	
A car	
Largest elephant	
Heaviest human	
A brick	
Largest kangaroo	
Largest domestic cat	

3. A packet of Crunchy Chunks breakfast cereal weighed 750 grams.
Billy had a bowl containing 50 grams of Crunchy Chunks every day.
How many days would the packet last?

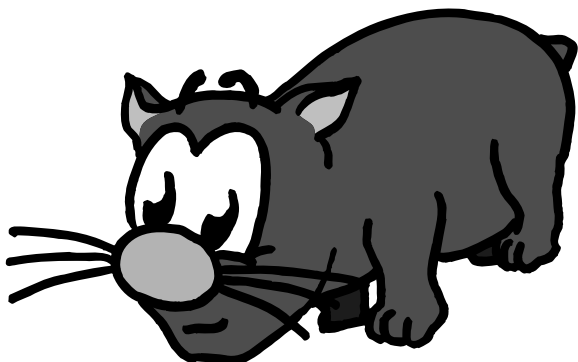
--

4. Lleyton had to give his cats some worming tablets. The instructions were two tablets for every kilogram that the cat weighed.
State how many tablets each of Lleyton's cats would need.

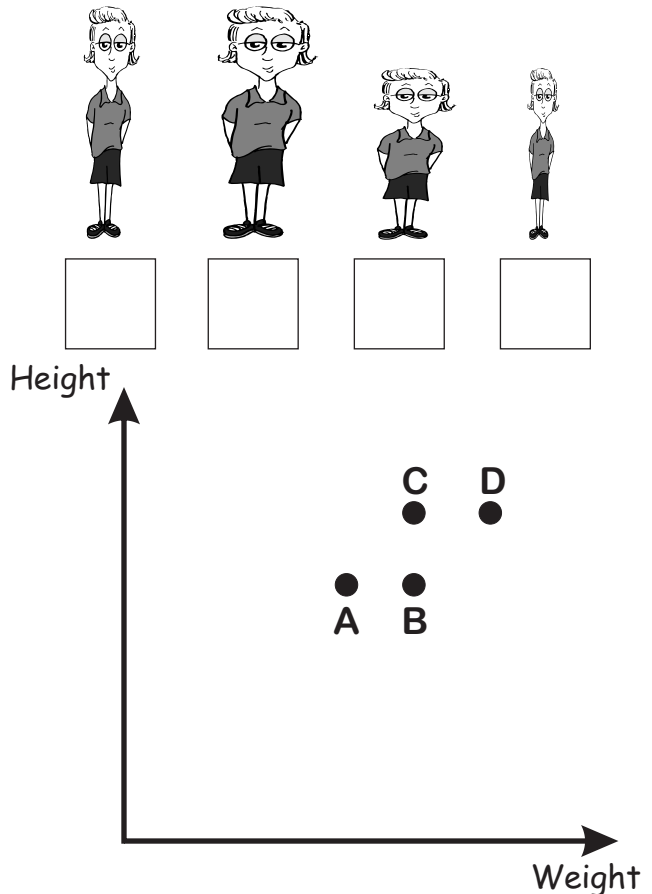
Boofer (6 kg)	tablets
Spike (3 kg)	tablets

5. Beth was nursing three sick wombats - Frodo, Pippen and Bilbo.
Frodo weighed 2 kg more than Pippen.
Bilbo was 3 kg lighter than Pippen.
Pippen weighed 8 kg.
Find the mass of Frodo and Bilbo.

Frodo	Kg
Bilbo	Kg



6. The height and weight of the four people below is recorded and plotted on the graph shown.
Study the four points on the graph and decide which point belongs to each of the four people. Write the letter for each point under the person to whom it belongs.



7. Irene was weighing fruit at a green-grocer. She found that three apples weighed the same as one pineapple. She also found that two pineapples and three apples had a total mass of 1800 grams.
Find the mass of a pineapple and an apple.

Pineapple	Grams
Apple	Grams