

SHAPES 1

MARK

13

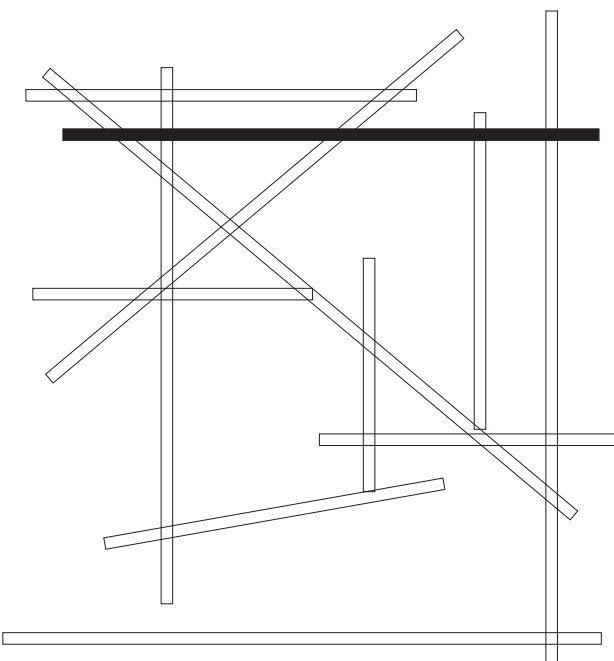
1. Next to the objects below write if they are usually **horizontal** or **vertical**.

Example Floor horizontal

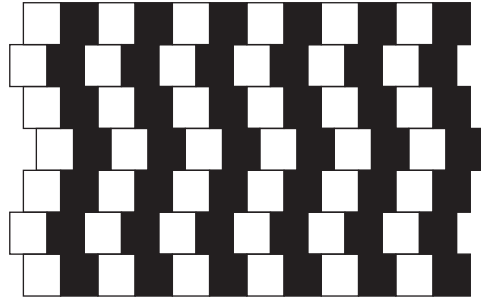
- (a) Wall _____
- (b) Bed _____
- (c) Flagpole _____
- (d) Desk top _____

2. (a) Colour in **red** all the lines that are **parallel** to the **black line** in the diagram below.

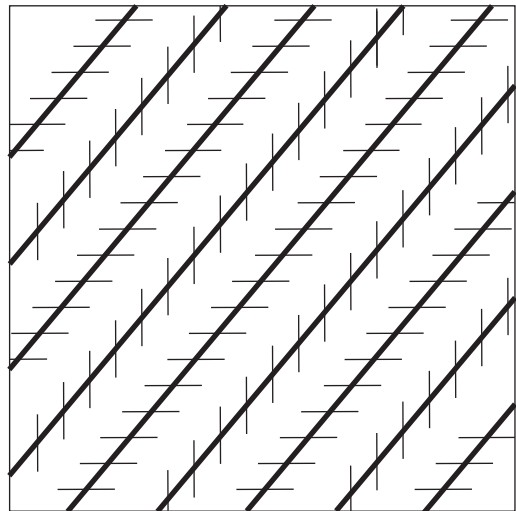
(b) Colour in **blue** all the lines that are **perpendicular** to the **black line**.



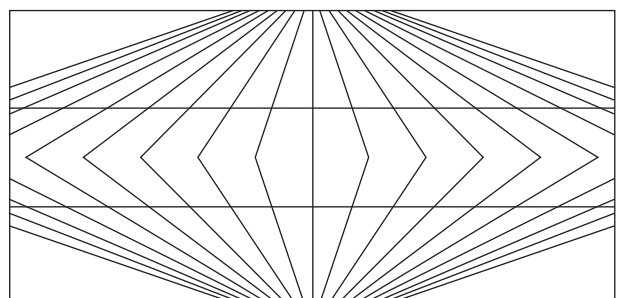
3. Are the horizontal lines in this diagram parallel?



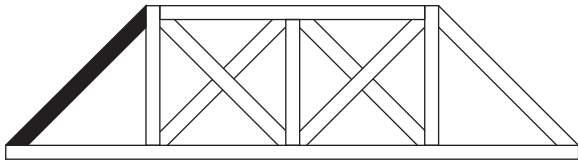
4. Are the dark lines in the diagram below parallel?



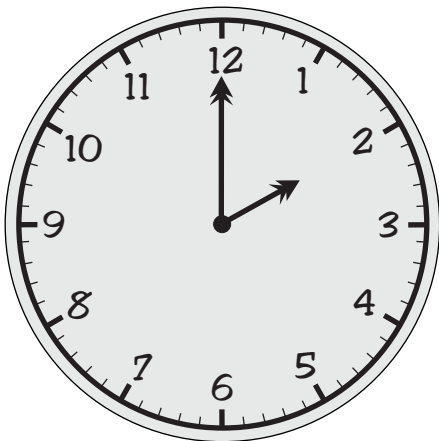
5. Are the two horizontal lines in the diagram below parallel?



6. The diagram below is a bridge. One of the bridge members is coloured in black.
- (a) Colour in **black** all the bridge members that are parallel to this one.
- (b) Colour in **yellow** all the bridge members that are perpendicular to the black one.
- (c) Colour in **red** all the horizontal bridge members.
- (d) Colour in **blue** all the vertical bridge members.



7. (a) What time is shown on the clock below?



- (b) Is the small angle between the hands of the clock at this time **greater than** or **less than** 90° ?

8. For the following times, state if the small angle between the hands of a clock would be:

- A Greater than 90°
 B Less than 90°

- (a) 1:00 (b) 5:00 (c) 11:00

- (d) 2:30 (e) 7:15 (f) 11:50

9. (a) Name one time when the hands of a clock are perpendicular.

- (b) What is the angle between the hands at this time?

10. Two words from this worksheet are written in the diagram below. One word is in each ring. Find the words and write them below.

