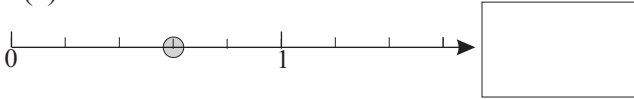


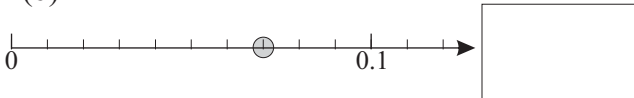
*Name:* \_\_\_\_\_

1. Write the number shown by the dot on each number line below.

(a)

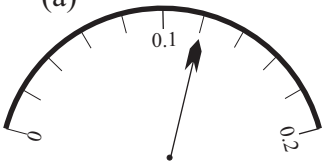


(b)

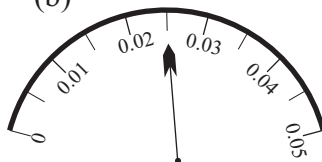


2. Write the number shown on these meters.

(a)




(b)




3. Round the amounts of money shown in table to:

- (a) the nearest 5 cents
- (b) the nearest 10 cents
- (c) the nearest \$1

Amount	Nearest 5c	Nearest 10c	Nearest \$1
\$5.36			
\$9.72			
\$20.48			
\$12.13			

4. How many decimal places are in the following numbers?

- (a) 2.35      (b) 10.3578      (c) 56.09701




5. Round the following numbers to **one decimal place**.

(a) 5.673

(b) 12.081

6. Round the following numbers to **two decimal places**.

- (a) 4.5618      (b) 19.8372      (c) 5.29611




7. Convert the following fractions to decimal numbers.

- (a)  $\frac{3}{10}$       (b)  $\frac{1}{4}$       (c)  $\frac{3}{5}$




- (d)  $\frac{5}{8}$       (e)  $\frac{11}{20}$       (f)  $5\frac{3}{4}$




8. Convert the following fractions to decimal numbers using a dot or bar to indicate the repeating numbers. Show workings.

- (a)  $\frac{5}{9}$       (b)  $\frac{2}{11}$



9. (a) Find two numbers that when rounded to one decimal place would both be 8.4, but when rounded to two decimal places would differ by three hundredths.



(b) Find two numbers that add to 10 and differ by one tenth.