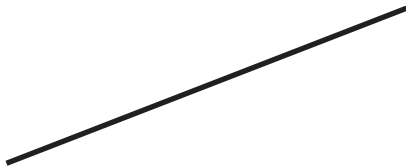


SHAPES 1

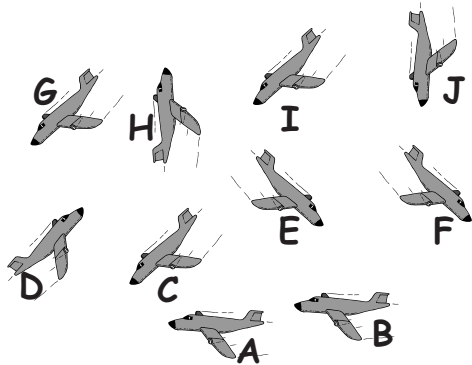
MARK

13

1. (a) Draw a **blue** line that is **parallel** to the line below.
 (b) Draw a **red** line that is **perpendicular** to the line below.



2. At an air show there were 10 planes performing a display. The planes are shown below.
 Planes A and B are flying horizontally.



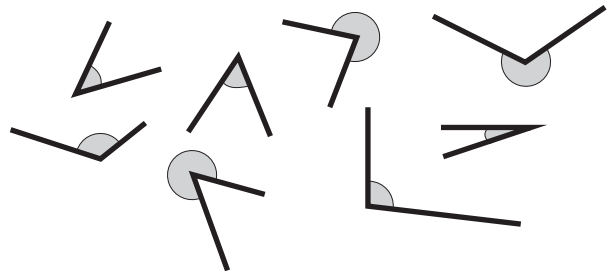
- (a) Which planes are flying vertically? _____
 (b) Which planes are flying perpendicular to plane A? _____
 (c) Which planes are flying parallel to plane C? _____
 (d) Which planes are flying perpendicular to plane D? _____

3. The capital letter **A** has one horizontal straight line.
 (a) Which capital letters have **one** vertical straight line?

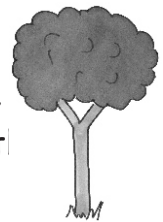
(b) Which capital letters have straight lines that are perpendicular? _____

(c) Which capital letter has three straight lines that are parallel? ____

4. Draw a circle around the angles below that are less than 90° .

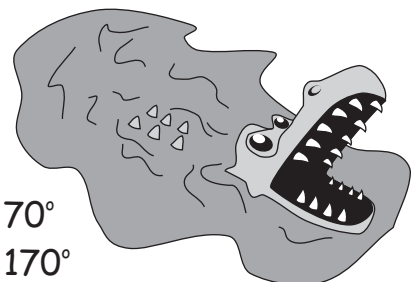


5. Circle the angle which is the best estimate of the angle this tree makes with the ground.



A 30° B 45° C 90° D 180°

6. Circle the angle which is the best estimate of the angle between the crocodile's jaws.



A 20° B 70°
 C 120° D 170°

7. The flagpole shown below is being supported by six cables.

(a) Guess which of the cables makes an angle of 45° with the ground?

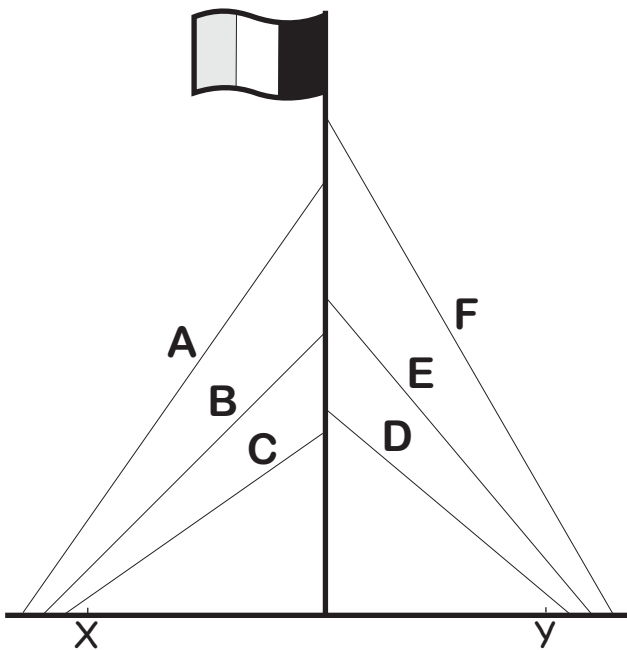
(b) Use the protractor to find the angle that cable A makes with the ground.

(c) Use a protractor to find which cable makes an angle of 45° with the ground.

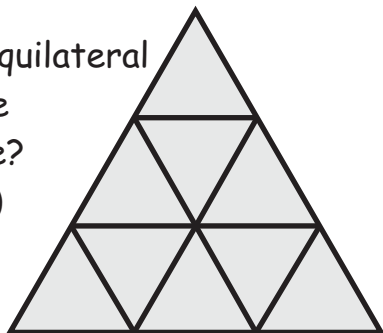
(d) What is the angle between cable F and the flag pole?

(e) Draw a line at an angle of 30° to the ground from point Y to the flagpole.

(f) Draw a line at an angle of 25° to the ground from point X to the flagpole.

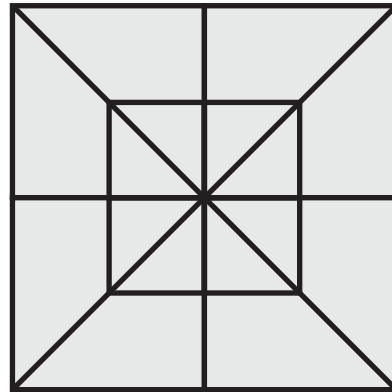


8. How many equilateral triangles are in this shape? (It is not 9!)

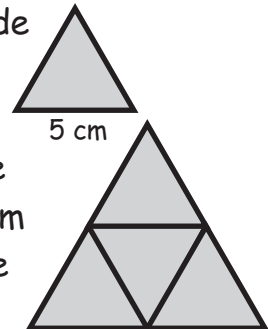


9. (a) How many squares are in the shape below?

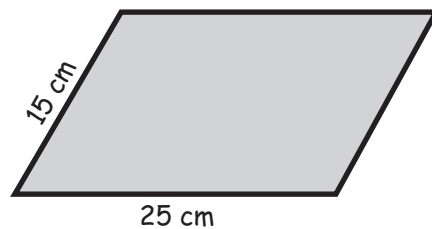
(b) How many right-angled triangles are in the shape below?



10. Peta uses tiles in the shape of equilateral triangles to make different shapes. The equilateral triangles have a side length of 5 cm. She can make an equilateral triangle of side length 10 cm using four of these tiles.



(a) How many tiles would be needed to make the shape below?



(b) Unscramble the letters from the following phrase to find the name of this shape.

A LARGE MAP ROLL
