

Name: _____

1. Clancy has scale statues of several birds. The statues are one fifth full size (scale factor 1:5).

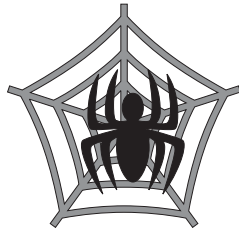
(a) If one of the statues was 8 cm tall, how tall was the actual bird?

_____ cm

(b) One of Clancy's statues was of a bird that had a wingspan of 80 cm. What was the wingspan of the statue?

_____ cm

2. A model spider is made and measures 24 cm long. If the actual spider is 4 cm long, what is the scale factor?



Scale factor = _____

3. Complete this table converting between metres (m) and centimetres (cm).

m	cm
1	
3	
4.5	
	500
	800
	930

4. Fiona has a doll's house that is one tenth full size (scale factor = 1:10).

Fiona wants to make furniture for her doll's house. Find the dimensions (in cm) of the models of the following items of furniture.

(a) Desk: 140 cm × 90 cm × 80 cm high

_____ cm × _____ cm × _____ cm high

(b) Wardrobe: 2 m high × 2.4 m long

_____ cm × _____ cm long

5. Zane collects models of cars. All his models have a scale factor of 1:20.

Complete the table below that shows the lengths of several of his models (in **cm**) and the actual cars (in **m**) they are models of.

Length of model (cm)	Length of car (m)
10	
12	
	3
	3.6

6. Joe found a red-backed spider that had a body that was 4 mm long. He drew a scale drawing of the spider using a scale of 1:30. How long (in **cm**) would be the body in his drawing?

_____ cm

7. Joe wanted to draw a picture of the largest known spider. This is the goliath bird-eating spider. The biggest one found had a leg span of 280 mm.

What would be the leg span (in **m**) of his drawing if he used the same scale (1:30)?

_____ m